

CONGAREE COMMONS

Pine Street and North Main Street, Congaree, SC 29170

CAPE

ASSET MANAGEMENT

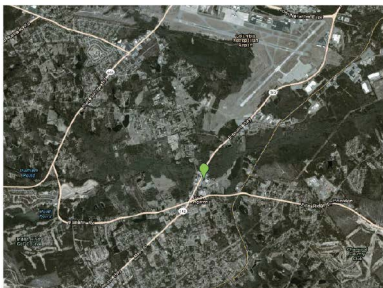
GROW YOUR BUSINESS **HERE**

Suite	Tenant	Size
671	SC Works	7,048
675	Food Lion	42,404
677	China Chef	1,200
679	Blueline Liquor	1,200
681	Subway	2,400
685	Coin Laundry	1,200
693	HiTone	2,400
	Canal Coffee Co	0,903
Future Development		Size
A	Future Development	1,200
B	Future Development	1,200
C	Future Development	1,200
D	Future Development	1,200



AVAILABLE

OVERVIEW



PROPERTY OVERVIEW

- Food Lion Anchored
- SC Works a state employment service, is junior anchor with high traffic
- 8,000 SF building available in Outparcel
- Close Proximity to Columbia Airport
- 1/2 mile from UPS Distribution

PROPERTY DETAILS

- Currently 61,452 SF of Retail Space
- Lease Rate: Call for Pricing
- 8,000 SF Building Available

Demographics	One Mile	Three Mile	Five Mile
Population	1,704	15,299	56,542
Median HH Income	\$51,948	\$59,882	\$60,440

GET IN TOUCH:

Carrie McNeil

M: (704)-496-7126

E: carrie@capeam.com

CAPE Asset Management
3735 Beam Road, Suite B
Charlotte, NC 28217